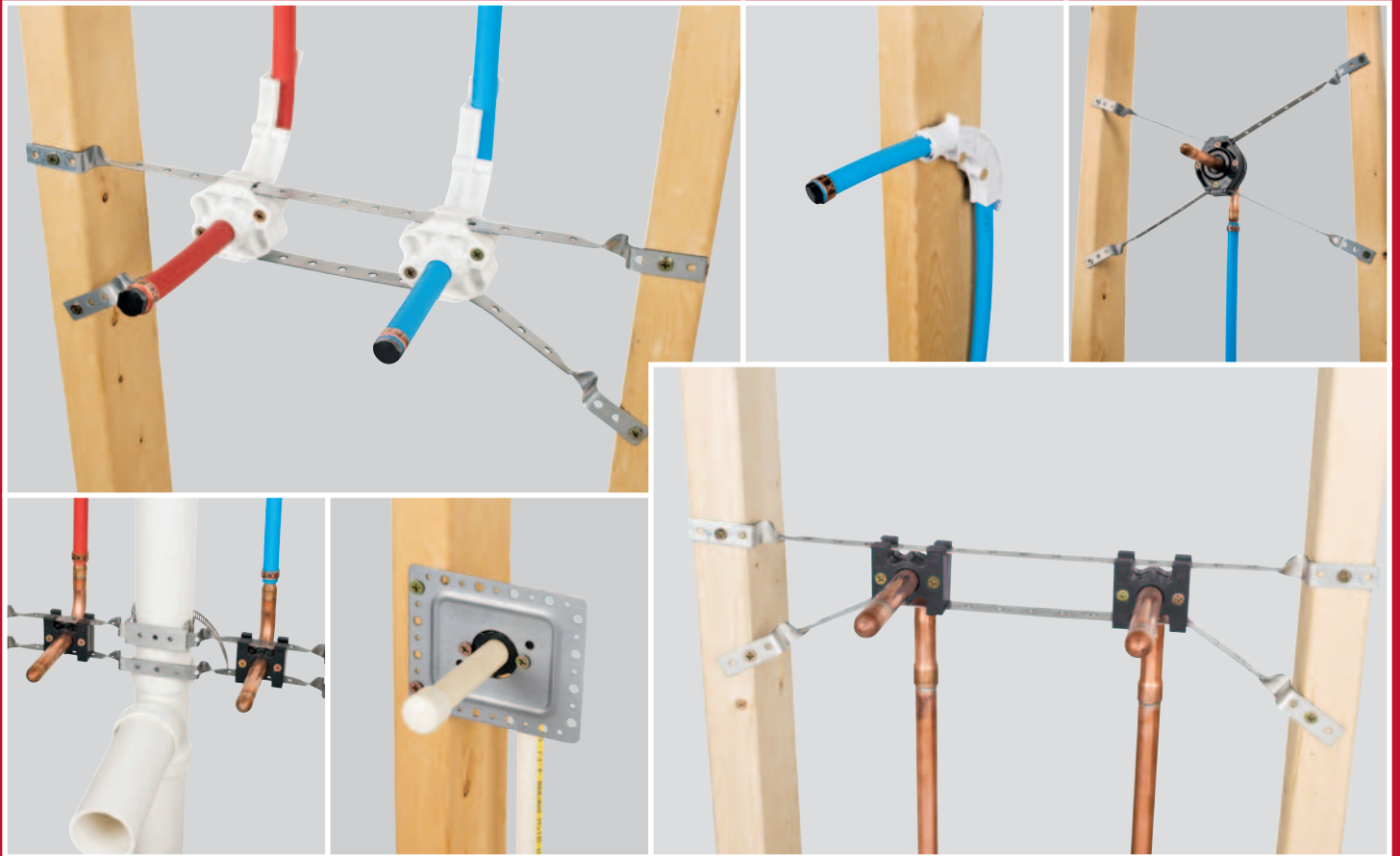


Strong Arm™

Bracketing System

Patents Pending



SOLID

- Rigidly secures any copper, PEX or CPVC CTS stub out and prevents ALL movement

VERSATILE

- Available for 16" and 24" stud bays

SAFE

- Takes the torch off the job site

COST EFFECTIVE

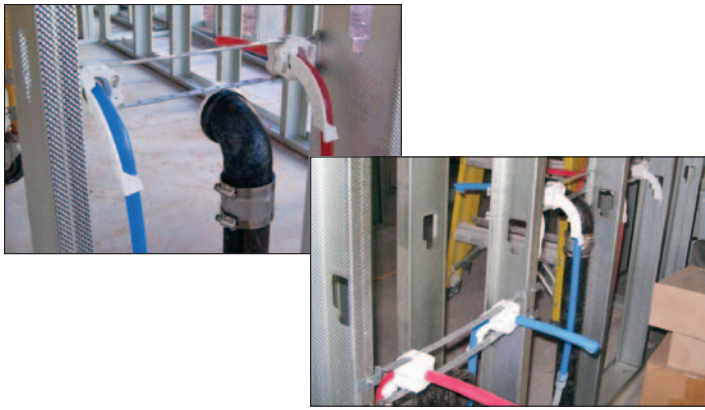
- Eliminates the need to solder any 1/2", 3/4" or 1" stub outs to copper bracket



Supply • Access • Drainage • Testing • Support • Specialties • Tools

Sioux Chief 
MANUFACTURING SINCE 1957

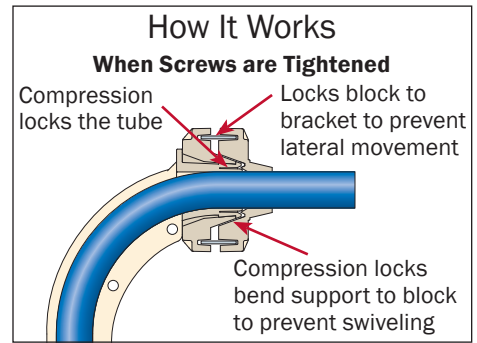
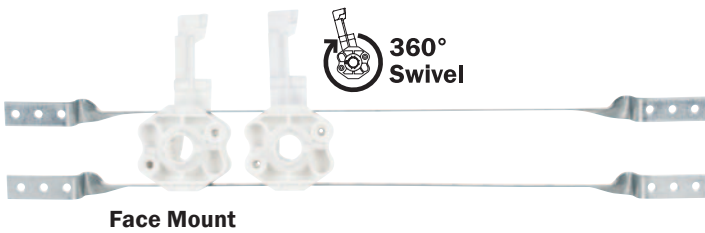
Strong Arm™ with PEX Bend Lock Block™



With Strong Arm, installation is easy. The PEX Bend Lock Blocks ship pre-installed on the brackets.

Once the block with elbow is positioned and the screws are installed and tightened, the block compresses on the tube and on the brackets at the same time, preventing the tube from moving.

The brackets can be installed parallel across the stud but when the brackets are spread apart after the blocks are tightened down, the installation becomes much stronger within the stud cavity.

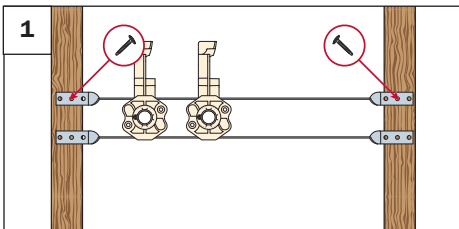


Problem Flimsy flat brackets with plastic elbows crack, break or pop out of the hole in the bracket.

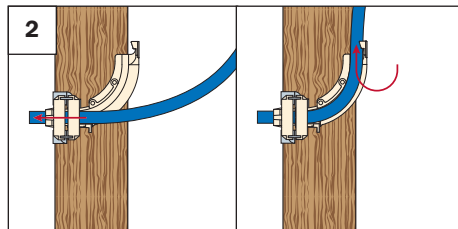
Solution Sioux Chief's superior PEX Bend Lock Block.



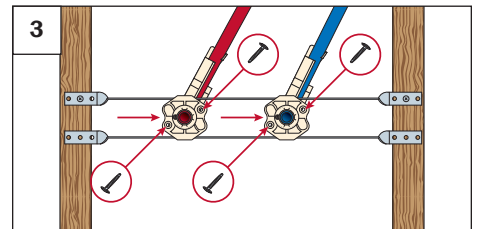
Installation Steps



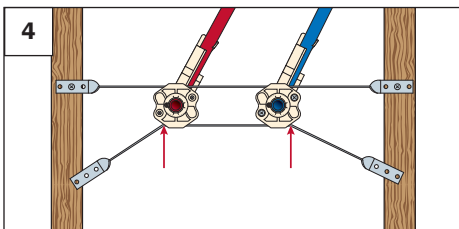
1 Determine stub out height. Secure top bracket to face of stud bay.



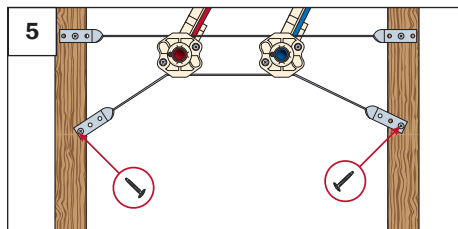
2 Working from the back of the bracket, insert flexible tube through the nose of the front block then bend tube and capture in place at tail end of elbow.



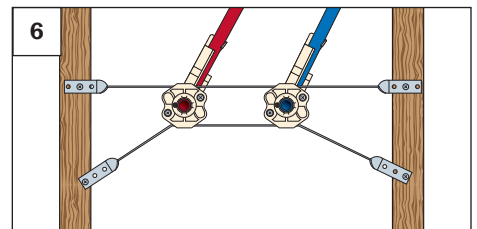
3 Slide plastic elbow block assembly to desired stub out location. Insert two screws into each block and tighten. Tightening screws prevents lateral movement of blocks on brackets and prevents elbow from swiveling and locks tube in place.



4 As close as possible to each block, bend the bottom bracket downward. Bending the bottom bracket provides the most rigid installation.

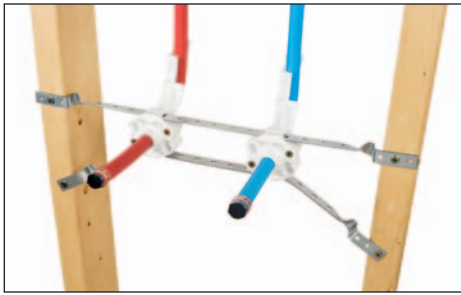


5 Secure each side of bottom bracket to stud.



6 Installation complete. Fast, easy, and secure.

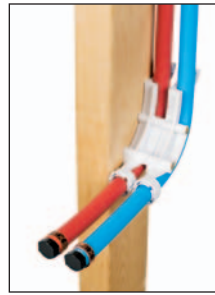
PEX Bend Lock Block™



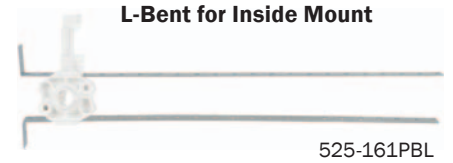
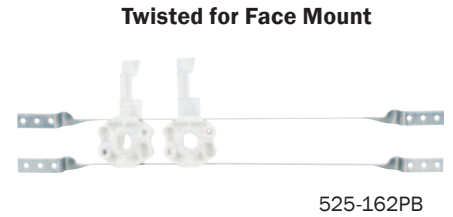
525-162PB installed.



One 525-P2 nailed directly to the stud.



Two 525-P2's stacked.

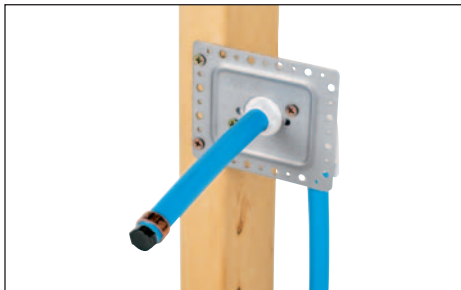


Item No.	Description	Pkg	Min. Qty	Case Qty	List Price
STRONG ARM WITH PEX BEND LOCK BLOCK FOR 16" STUD BAYS					
525-161PB	Twisted bracket with one PEX Bend Lock Block	B	25	25	4.13 EA
525-162PB	Twisted bracket with two PEX Bend Lock Blocks	B	25	25	4.95 EA
525-161PBL	L-bent bracket with one PEX Bend Lock Block	B	25	25	4.13 EA
525-162PBL	L-bent bracket with two PEX Bend Lock Blocks	B	25	25	4.95 EA
STRONG ARM WITH PEX BEND LOCK BLOCK FOR 24" STUD BAYS					
525-241PB	Twisted bracket with one PEX Bend Lock Block	B	25	25	4.56 EA
525-242PB	Twisted bracket with two PEX Bend Lock Blocks	B	25	25	5.38 EA
525-241PBL	L-bent bracket with one PEX Bend Lock Block	B	25	25	4.56 EA
525-242PBL	L-bent bracket with two PEX Bend Lock Blocks	B	25	25	5.38 EA
BULK COMPONENTS					
525-P2	½" PEX elbow	B	50	50	1.14 EA
NEW 525-P22	½" PEX Bend Lock Block with elbow	B	50	50	1.79 EA
525-16T	Twisted bracket for 16" stud bays	B	100	100	1.10 EA
525-24T	Twisted bracket for 24" stud bays	B	100	100	1.25 EA
525-20B	L-bent bracket for 16" stud bays	B	100	100	1.10 EA
525-27B	L-bent bracket for 24" stud bays	B	100	100	1.25 EA
591-06B	#6 × 1" screw, coarse thread for wood studs, 100/bag	B	1	10	2.25 EA
591-081	#8 × 1" screw, drill tip point for metal studs, 100/bag	B	1	10	4.80 EA

NOTE: All pre-assembled brackets include bulk wood screws for mounting brackets to wood studs. For metal studs, please order 591-081 drill-tip screws separately.



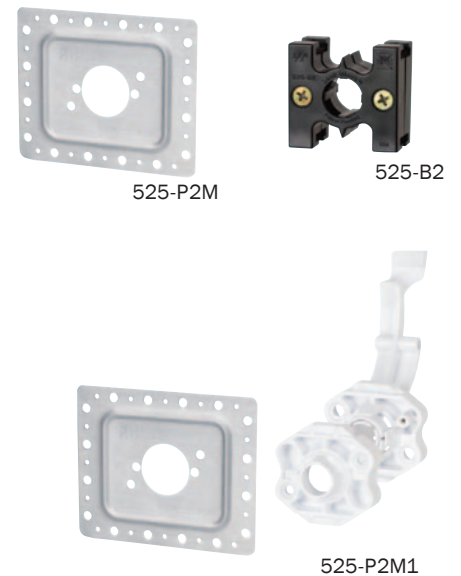
Lock Block Face Plate



525-P2M1 installed.



525-P2M installed with standard Lock Block.



Item No.	Description	Pkg	Min. Qty	Case Qty	List Price
NEW 525-P2M	Lock Block Face Plate	B	25	100	1.30 EA
NEW 525-P2M1	Lock Block Face Plate with PEX Bend Lock Block	B	25	25	2.85 EA
525-B2	½" Lock Block	B	50	50	0.75 EA

Packaging Codes || B: bulk C: cut-case box *: individually bar-coded

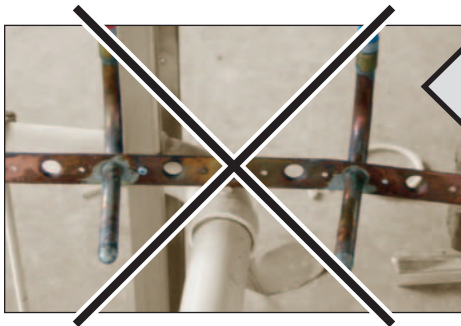
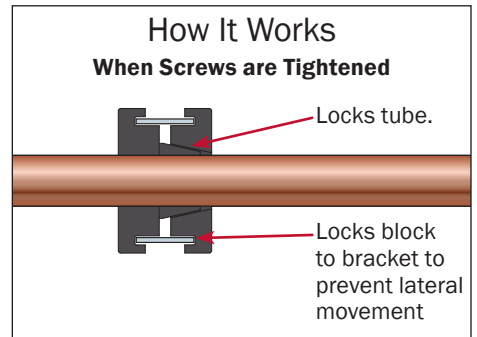
Strong Arm™ with Lock Block™



Strong Arm with Lock Block has all of the features and benefits of the Strong Arm with PEX Bend Lock Block except it is not limited to PEX tubing. Rigidly secure any CTS stub out using the Strong Arm with Lock Block.

Once the block is positioned and the screws on the blocks are tightened, the Lock Block compresses on the tube and on the brackets at the same time preventing the tube from moving.

The brackets can be installed parallel across the stud but when the brackets are spread apart after the blocks are tightened down, the installation becomes much stronger within the stud cavity.

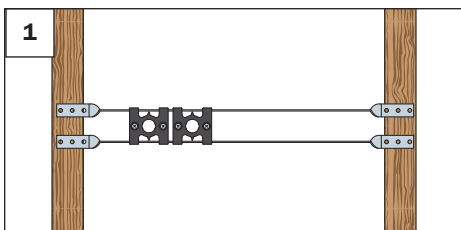


Problem Flat brackets flex causing stub out to move. Copper-plated brackets require extra time to prep and solder the stub out.

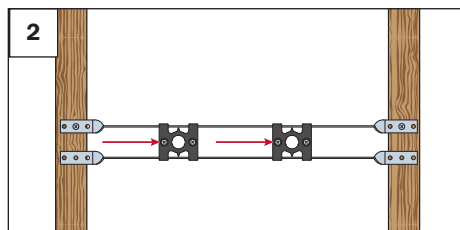
Solution Remove the torch from the job site; only a screw gun is needed and stub outs do not move.



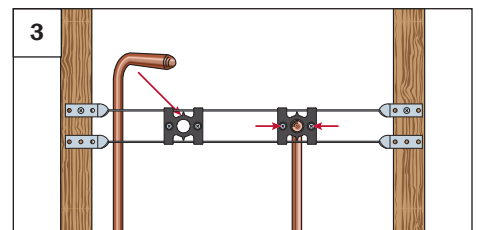
Installation Steps



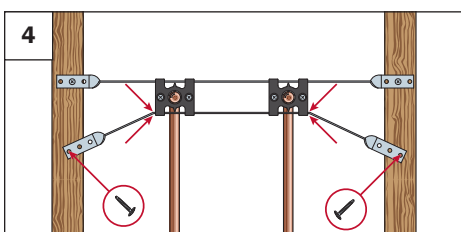
1 Determine stub out height. Secure top bracket to studs on each side of stud bay. Do NOT secure bottom bracket yet.



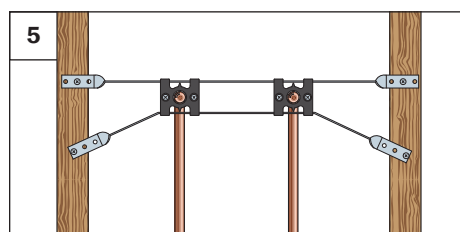
2 With bottom bracket still loose, slide Lock Blocks across to desired stub out location.



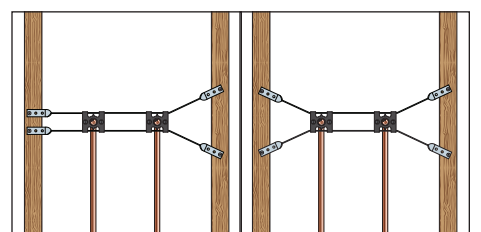
3 Install stub outs or stub out elbows. Tighten both screws in each block to secure stub out and prevent lateral movement.



4 Bend bottom bracket as close as possible to Lock Block and secure bracket to stud.

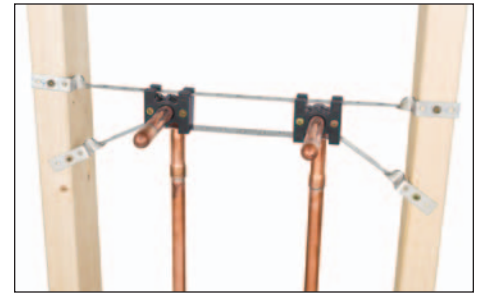
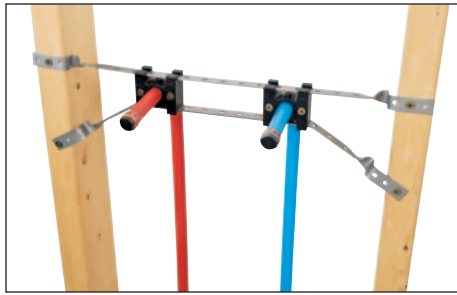
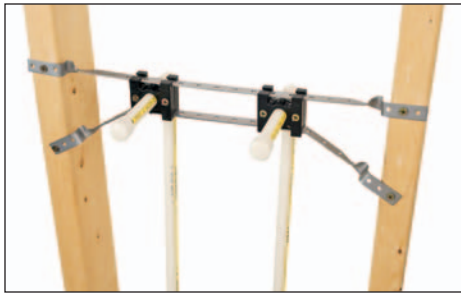


5 Completed installation (as recommended).



Alternative completed installations. Fast, easy, and secure.

Lock Block™

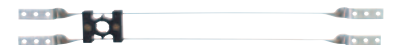


Pre-assembled and compatible with any type of 1/2", 3/4" or 1" tubing.

Standard

Item No.	Description	Pkg	Min. Qty	Case Qty	List Price
STRONG ARM WITH STANDARD LOCK BLOCKS FOR 16" STUD BAYS					
525-1612	Twisted bracket with one 1/2" Lock Block	B	25	25	3.00 EA
525-1613	Twisted bracket with one 3/4" Lock Block	B	25	25	3.15 EA
525-1614	Twisted bracket with one 1" Lock Block	B	25	25	3.30 EA
525-1622	Twisted bracket with two 1/2" Lock Blocks	B	25	25	3.75 EA
525-1622PK1	Twisted bracket with two 1/2" Lock Blocks	C*	25	25	5.25 EA
525-1623	Twisted bracket with two 3/4" Lock Blocks	B	25	25	3.90 EA
525-1624	Twisted bracket with two 1" Lock Blocks	B	25	25	4.05 EA
STRONG ARM WITH STANDARD LOCK BLOCKS FOR 24" STUD BAYS					
525-2412	Twisted bracket with one 1/2" Lock Block	B	25	25	3.36 EA
525-2413	Twisted bracket with one 3/4" Lock Block	B	25	25	3.51 EA
525-2414	Twisted bracket with one 1" Lock Block	B	25	25	4.06 EA
525-2422	Twisted bracket with two 1/2" Lock Blocks	B	25	25	4.11 EA
525-2423	Twisted bracket with two 3/4" Lock Blocks	B	25	25	4.26 EA
525-2424	Twisted bracket with two 1" Lock Blocks	B	25	25	4.81 EA
BULK COMPONENTS					
525-B2	1/2" Lock Block	B	50	50	0.75 EA
525-B3	3/4" Lock Block	B	50	50	0.80 EA
525-B4	1" Lock Block	B	50	50	0.85 EA
525-16T	Twisted bracket for 16" stud bays	B	100	100	1.10 EA
525-24T	Twisted bracket for 24" stud bays	B	100	100	1.25 EA
525-20B	L-bent bracket for 16" stud bays	B	100	100	1.10 EA
525-27B	L-bent bracket for 24" stud bays	B	100	100	1.25 EA
591-06B	#6 x 1" screw, coarse thread for wood studs, 100/bag	B	1	10	2.25 EA
591-081	#8 x 1" screw, drill tip point for metal studs, 100/bag	B	1	10	4.80 EA

Twisted for Face Mount



525-1612



525-2422



525-1622PK1

Standard Lock Block



525-B2

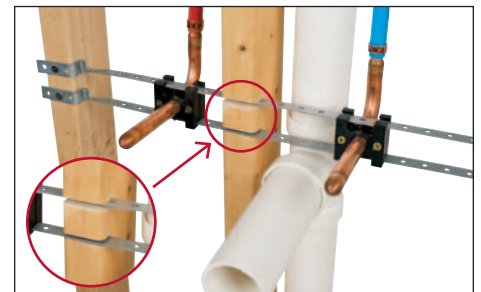


525-B3



Flame-Rated

Item No.	Description	Pkg	Min. Qty	Case Qty	List Price
STRONG ARM WITH UL-94 V0 FLAME-RATED LOCK BLOCKS FOR 16" STUD BAYS					
525-1612R	Twisted bracket with one 1/2" flame-rated Lock Block	B	25	25	3.60 EA
525-1613R	Twisted bracket with one 3/4" flame-rated Lock Block	B	25	25	3.75 EA
525-1614R	Twisted bracket with one 1" flame-rated Lock Block	B	25	25	3.90 EA
525-1622R	Twisted bracket with two 1/2" flame-rated Lock Blocks	B	25	25	4.90 EA
525-1623R	Twisted bracket with two 3/4" flame-rated Lock Blocks	B	25	25	5.05 EA
525-1624R	Twisted bracket with two 1" flame-rated Lock Blocks	B	25	25	5.20 EA
STRONG ARM WITH UL-94 V0 FLAME-RATED LOCK BLOCKS FOR 24" STUD BAYS					
525-2412R	Twisted bracket with one 1/2" flame-rated Lock Block	B	25	25	4.06 EA
525-2413R	Twisted bracket with one 3/4" flame-rated Lock Block	B	25	25	4.21 EA
525-2414R	Twisted bracket with one 1" flame-rated Lock Block	B	25	25	4.36 EA
525-2422R	Twisted bracket with two 1/2" flame-rated Lock Blocks	B	25	25	5.44 EA
525-2423R	Twisted bracket with two 3/4" flame-rated Lock Blocks	B	25	25	5.59 EA
525-2424R	Twisted bracket with two 1" flame-rated Lock Blocks	B	25	25	5.74 EA
BULK COMPONENTS					
525-B2R	1/2" UL-94 V0 flame-rated Lock Block	B	50	50	1.34 EA
525-B3R	3/4" UL-94 V0 flame-rated Lock Block	B	50	50	1.39 EA
525-B4R	1" UL-94 V0 flame-rated Lock Block	B	50	50	1.44 EA



Cut stud 1/2" with saw when stub outs are in separate stud bays.

Flame-Rated Lock Block



525-B2R



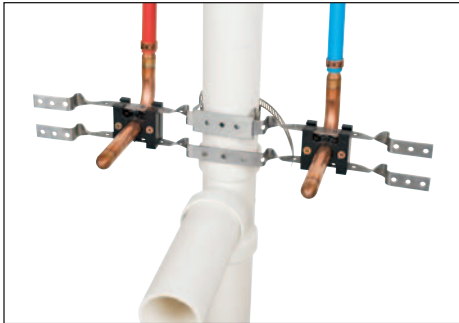
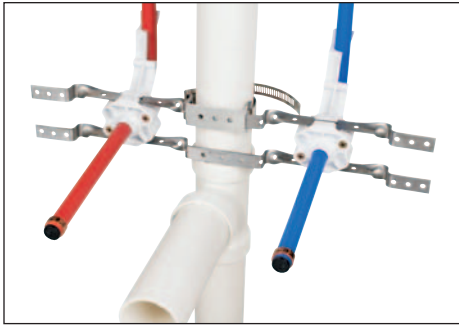
525-B3R



NOTE: All pre-assembled brackets include bulk wood screws for mounting brackets to wood studs. For metal studs, please order 591-081 drill-tip screws separately.

Packaging Codes || B: bulk C: cut-case box *: individually bar-coded

NEW Strong Arm™ Vent Support



- Secure directly to vent pipe when studs are not available (ideal for pedestal lavs & island sinks)
- Snap-Lock band secures to 1½"–2" DWV
- Completely pre-assembled to reduce labor costs

Item No.	Description	Pkg	Min. Qty	Case Qty	List Price
STRONG ARM WITH LOCK BLOCKS - VENT PIPE APPLICATION					
525-1622V	Strong Arm with two ½" Lock Blocks for Vent Pipe with saddle clamp and stainless steel snap-lock band	B	25	25	6.10 EA
STRONG ARM WITH PEX BEND LOCK BLOCKS - VENT PIPE APPLICATION					
525-162PBV	Strong Arm with two ½" PEX Bend Lock Blocks for Vent Pipe with saddle clamp and stainless steel snap-lock band	B	25	25	7.30 EA
DOUBLE TWISTED BRACKETS - BULK					
525-16TX2	16" Strong Arm Bracket with extra twists	B	100	100	1.25 EA
525-24TX2	24" Strong Arm Bracket with extra twists	B	100	100	1.40 EA

Shower WallNut™ Lock Block™



- The Shower WallNut Lock Block is much bigger, providing a larger surface area around the copper stub out to provide backing for the drywall mud
- The Shower WallNut Lock Block is so rigid, installers can now use a PEX or a CPVC riser from the valve to the copper stub-out elbow and use a Shower WallNut to bring the shower arm connection outside the finished wall



525-16WLB



525-WLB

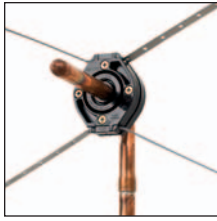
Item No.	Description	Pkg	Min. Qty	Case Qty	List Price
STRONG ARM WITH SHOWER WALLNUT LOCK BLOCK					
525-16WLB	Twisted bracket with one ½" Shower WallNut Lock Block for 16" stud bays	B	25	25	3.82 EA
525-24WLB	Twisted bracket with one ½" Shower WallNut Lock Block for 24" stud bays	B	25	25	4.18 EA
BULK COMPONENTS					
525-WLB	Shower WallNut Lock Block for supporting ½" riser stub out	B	50	50	1.20 EA
525-16T	Twisted bracket for 16" stud bays	B	100	100	1.10 EA
525-24T	Twisted bracket for 24" stud bays	B	100	100	1.25 EA
591-06B	#6 × 1" screw, coarse thread for wood studs, 100/bag	B	1	10	2.25 EA
591-081	#8 × 1" screw, drill tip point for metal studs, 100/bag	B	1	10	4.80 EA

NOTE: All pre-assembled brackets include bulk wood screws for mounting brackets to wood studs. For metal studs, please order 591-081 drill-tip screws separately.

Sioux Chief Manufacturing tel: 1-800-821-3944 fax: 1-800-758-5950 siouxchief.com

Shower WallNut™

Patent # 6,378,912



Stub out with 1/2" type L copper and securely fasten behind wall.



After installing finish wall, sand the entire stub out surface back to the finished wall.



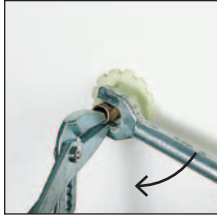
Cut off stub out leaving exactly 1 1/2" to finished wall.



Push Shower WallNut over stub out and against wall.



616-02C

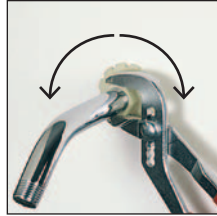


Insert nose of pliers and hold tube firmly. Swing shower arm tool (or second set of pliers), levering off pliers.



Hold hex then thread shower arm completely and tightly into FIP threads.

Note: DO NOT use thread sealant or Teflon® tape on Shower WallNut end of shower arm. Use brass shower arms only.



Straighten shower arm.



Firmly push deep escutcheon onto Shower WallNut until it snaps and locks into place.



307-625



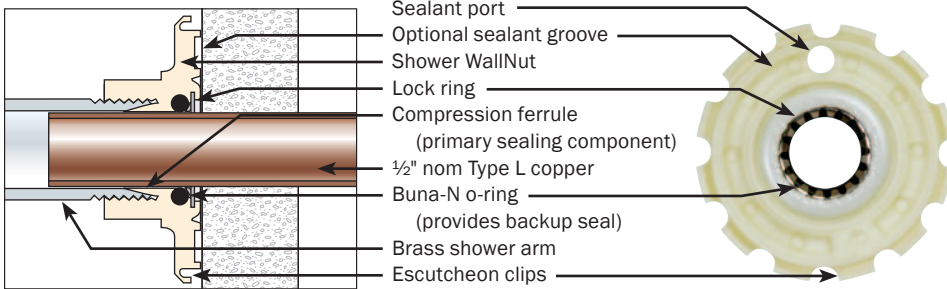
307-616



974-60304

Sioux Chief's Shower WallNut System carries a Limited Lifetime Warranty only when all of the following Sioux Chief components are used and installed per manufacturer's instructions:

1. Sioux Chief copper stub-out ell or preformed copper shower riser
2. Strong Arm Bracket with WallNut Lock Block
3. Shower WallNut Shower Arm Adapter



DO NOT use pipe dope or tape



Chrome

Polished Brass

White Enamel

Oil-Rubbed Bronze

Pearl Nickel

Satin Nickel

ESCUTCHEON FINISH CROSS-REFERENCE

Oil-Rubbed Bronze matches	Moen® Oil Rubbed Bronze Delta® Venetian Bronze Danze® Oil Rubbed Bronze Price Pfister® Oil Rubbed Bronze
Pearl Nickel matches	Delta® Pearl Nickel Moen® Satine
Satin Nickel matches	Delta® Satin Nickel Kohler® Vibrant Brushed Nickel Price Pfister® Brushed Nickel Moen® Brushed Nickel



Item No.	Description	Pkg	Min. Qty	Case Qty	List Price
SHOWER WALLNUT KITS					
616-02C	WallNut with chrome escutcheon, bagged	B*	25	25	3.80 EA
616-02P	WallNut with polished brass escutcheon, bagged	B*	25	25	4.62 EA
616-02W	WallNut with white enamel escutcheon, bagged	B*	25	25	4.35 EA
616-02RB	WallNut with oil-rubbed bronze escutcheon, bagged	B*	1	25	23.40 EA
616-02PN	WallNut with pearl nickel escutcheon, bagged	B*	1	25	10.26 EA
616-02SN	WallNut with satin nickel escutcheon, bagged	B*	1	25	10.06 EA
TOOLS & ACCESSORIES					
307-625	Shower arm installation tool, individually bagged	B	1	6	7.19 EA
307-616	Shower WallNut removal tool, bagged	B*	1	10	15.46 EA
974-60304	4" long x 1/2" MIP shower arm, individually bagged	B*	1	25	5.64 EA

Packaging Codes || B: bulk C: cut-case box *: individually bar-coded

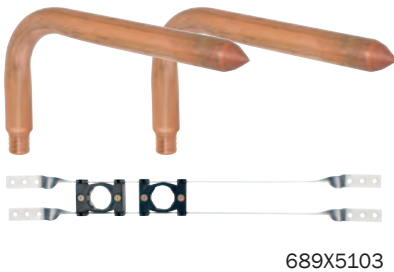
Toilet Kits



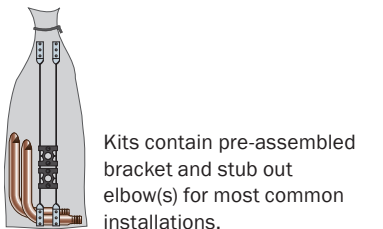
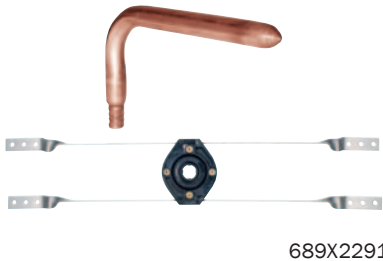
Lav Kits



Water Heater Kits

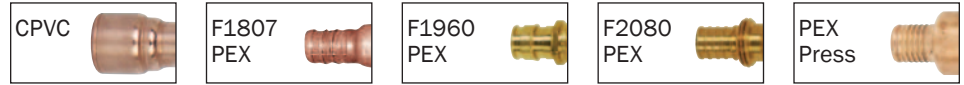


Shower Riser Kits



Rough-In Kits

- Individually packaged kits help manage materials at the job site and reduce inventory
- Preformed copper elbows provide a rigid termination to plastic piping systems
- Strong Arm brackets speed installation and eliminate callbacks for loose stub outs



Kit Item No.	Bulk Item No.	Description	Pkg	Min. Qty	Case Qty	List Price
TOILET KITS FOR 16" STUD BAYS						
689C0101	630-C248 525-1612	3½" × 8", ½" CPVC socket stub out elbow Strong Arm brackets with one, ½" Lock Block	B	12	12	7.96 KT
689X2201	630X248 525-1612	3½" × 8", ½" F1807 PEX stub out elbow Strong Arm brackets with one, ½" Lock Block	B	12	12	6.23 KT
689W2201	630W248 525-1612	3½" × 8", ½" F1960 PEX stub out elbow Strong Arm brackets with one, ½" Lock Block	B	12	12	8.95 KT
NEW 689A2201	630A261186 525-1612	4" × 8", ½" F2080 PEX stub out elbow Strong Arm brackets with one, ½" Lock Block	B	12	12	11.42 EA
NEW 689V2201	630V248 525-1612	4" × 8", ½" PEX Press stub out elbow Strong Arm brackets with one, ½" Lock Block	B	12	12	10.04 EA
LAV KITS FOR 16" STUD BAYS						
689C1102	630-C248 525-1622	Two 3½" × 8", ½" CPVC socket stub out elbows Strong Arm brackets with two ½" Lock Blocks	B	12	12	13.67 KT
689X3202	630X248 525-1622	Two 3½" × 8", ½" F1807 PEX stub out elbows Strong Arm brackets with two ½" Lock Blocks	B	12	12	10.21 KT
689W3202	630W248 525-1622	Two 3½" × 8", ½" F1960 PEX stub out elbows Strong Arm brackets with two ½" Lock Block	B	12	12	15.65 KT
NEW 689A3202	630A261186 525-1622	Two 4" × 8", ½" F2080 PEX stub out elbows Strong Arm brackets with two, ½" Lock Block	B	12	12	20.59 EA
NEW 689V3202	630V248 525-1622	Two 4" × 8", ½" PEX Press stub out elbows Strong Arm brackets with two, ½" Lock Block	B	12	12	17.83 EA
WATER HEATER KITS FOR 16" STUD BAYS						
689C3103	630-C348 525-1623	Two 6" × 8", ¾" CPVC socket stub out elbows Strong Arm brackets with two ¾" Lock Block	B	12	12	23.10 KT
689X5103	630X348 525-1623	Two 4" × 8", ¾" F1807 PEX stub out elbows Strong Arm brackets with two ¾" Lock Block	B	12	12	18.04 KT
689W5103	630W348 525-1623	Two 4" × 8", ¾" F1960 PEX stub out elbows Strong Arm brackets with two ¾" Lock Block	B	12	12	40.86 KT
NEW 689A5103	630A266687 525-1623	Two 6" × 8", ¾" F2080 PEX stub out elbows Strong Arm brackets with two, ¾" Lock Block	B	12	12	36.55 EA
SHOWER KITS FOR 16" STUD BAYS						
689C0191	630-C248 525-16WLB	3½" × 8", ½" CPVC socket stub out elbow Strong Arm brackets with one ½" Shower WallNut Lock Block	B	12	12	8.78 KT
689X2291	630X248 525-16WLB	3½" × 8", ½" F1807 PEX stub out elbow Strong Arm brackets with one ½" Shower WallNut Lock Block	B	12	12	7.05 KT
689W2291	630W248 525-16WLB	3½" × 8", ½" F1960 PEX stub out elbow Strong Arm brackets with one ½" Shower WallNut Lock Block	B	12	12	9.77 KT
NEW 689A2291	630A266687 525-16WLB	4" × 8", ½" F2080 PEX stub out elbow Strong Arm brackets with one ½" Shower WallNut Lock Block	B	12	12	12.24 EA
NEW 689V2291	630V248 525-16WLB	4" × 8", ½" PEX Press stub out elbow Strong Arm brackets with one ½" Shower WallNut Lock Block	B	12	12	10.86 EA

Kits for 24" stud bays available. Call factory for details

DISTRIBUTED BY

24110 South Peculiar Drive
Peculiar, Missouri 64078
tel: 1-800-821-3944
fax: 1-800-758-5950
www.siouxchief.com

